

 NUVAUX

Premium Passive Windows & Doors



NUVAUX



200-2180 Ste-Catherine O., Montréal, QC H3H 1M7, CA  
+1 514.500.3338 | sales@nuvaux.com | www.nuvaux.com





# PREMIUM QUALITY ALUMINUM

The German manufacturer of doors and windows

Crafting premium quality aluminum glass windows and doors using cutting-edge technology, providing a superior experience of comfort and quality in your daily living spaces.

Designed to withstand the rigorous weather conditions of Canada, Moser products are fully certified for use in the country, and their sleek and modern design exudes a stunning aesthetic appeal.



Mercedes-Benz Museum - Germany





# PASSIVE DOOR & WINDOW SYSTEMS

ARE DESIGNED TO MEET ALL YOUR NEEDS

The National Fenestration Rating Council (NFRC) is responsible for establishing benchmark performance ratings for all energy-efficient windows, doors, and skylights. NFRC labels allow customers to compare various energy-efficient products across the board. Energy-efficient windows can help improve your home's comfort and give you savings on heating and cooling costs.



Passive door and window systems have been developed in Germany with the principles of passive home construction in mind. These systems incorporate high-quality materials and cutting-edge technology to reduce the need for heating and air conditioning in buildings. By maximizing insulation values and ensuring airtightness, Moser windows provide comfort to occupants while reducing energy costs. Experience the benefits of passive home construction with Passive door and window systems.



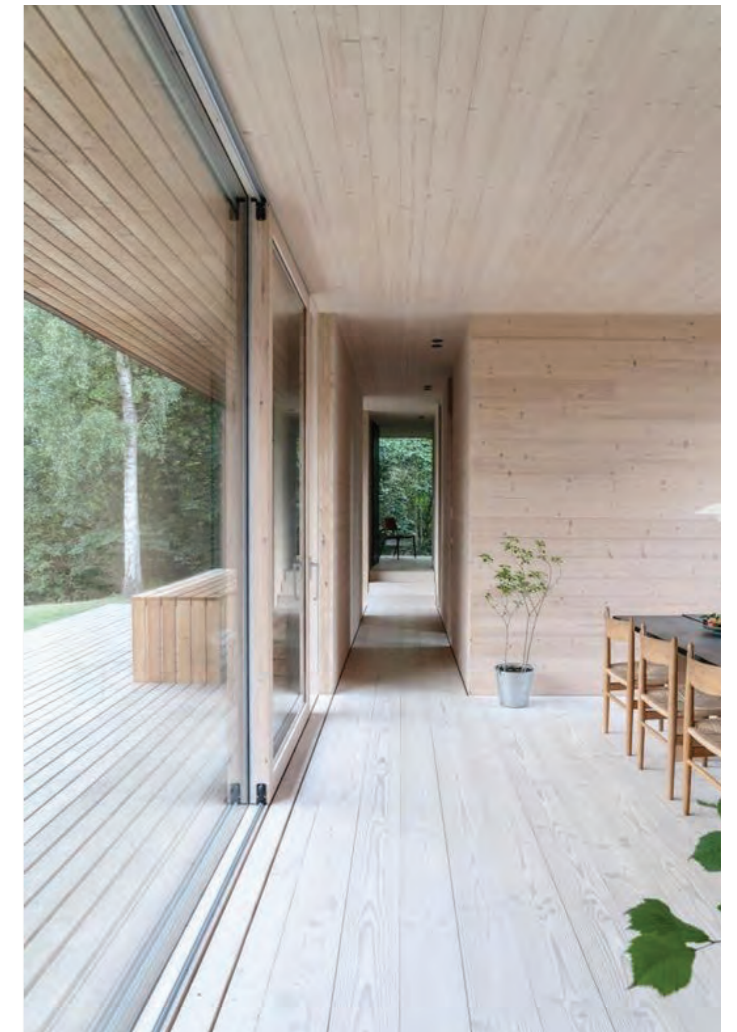


When looking for windows that meet the high standards of eco-build and Passive house certified projects, there are several key factors to consider. In addition to the design, you'll want to prioritize air-tightness, insulation, and solar gain. Our windows excel in all of these areas, with their cutting-edge technology ensuring maximum energy efficiency and comfort for your home or building. With us, you can have the peace of mind that your windows are not only beautiful, but also functional and sustainable.

## PASSIVE WINDOW SYSTEMS

Passive windows are not your average windows. They provide not only ventilation but also airtightness when closed. The manufacturing process of passive windows involves scientific calculation and design, customized material configuration, and precise manufacturing using advanced equipment and tools.

The installation of passive windows is also different from traditional windows. They require external hanging installation, which places high demands on the strength and corrosion resistance of the installation support. Due to their weight, any installation mistakes can lead to serious consequences such as falling, leaking, air leakage, or even the whole window falling off, which could ultimately damage the entire exterior wall structure.



## PASSIVE ENTRANCE DOOR SYSTEMS

The entrance to a passive building is far from ordinary; a door that combines five essential functions: sealing, heat preservation, sound insulation, fire prevention, and anti-theft. It is designed with special technology and precision-crafted using exceptional materials, tailored to different building types and weather conditions.

The passive ultra-low energy building access system is certified by German PHI as a passive access system. The structure comprises two parts: an outdoor metal panel and an indoor wooden body, filled with A1 grade fire-proof and thermal insulation material, and three rubber seals for maximum efficiency.

Furthermore, the passive door is equipped with multi-point lock hardware to enhance its anti-theft capabilities and can incorporate intelligent identification systems such as fingerprint and password for added security.





# DOOR & WINDOW SYSTEMS

Our systems are exclusively designed in Germany and equipped with premium hardware and glazing, ensuring superior quality and performance.



## PASSIVE ALUMINUM SYSTEM

This window system is a sustainable and eco-friendly choice that can help you save on heating and cooling costs throughout the year. Additionally, its natural beauty adds a touch of elegance to any space.

Invest in the Passive Aluminum System for your windows and enjoy the energy-saving advantages and visual appeal it provides.



## PASSIVE ALUMINUM-CLAD WOOD SYSTEM

This premium window system is designed with two pieces of metal, resulting in reduced distortion and minimal heat loss.

By combining the best features of aluminum and wood, this system offers unparalleled thermal performance, durability, and German craftsmanship, making it ideal for modern architectural projects, luxury homes, and passive houses.



## PASSIVE ENTRANCE DOOR SYSTEM

Enhance your living space with our modern doors, featuring a diverse range of designs and materials, including solid woods, copper, aluminum, and stone-textured panels. Our high-end series offers bespoke options and innovative passive technology, providing a comfortable, healthy, and energy-saving environment. Experience luxury living with our sustainable and precision-crafted products.



# OPENING SYSTEMS

Our opening systems offer a harmonious blend of modern aesthetics and premium hardware and materials, ensuring exceptional performance in thermal efficiency, noise reduction, and safety.

We take a personalized approach to understand your unique requirements and provide tailored solutions to match. With a range of customizable elements, you can truly make it your own.

Our expert team of professionals fabricates and installs each system from scratch, ensuring a flawless fit and finish every time.





# TILT & TURN

## ADVANTAGES

Tilt turn windows provide a touch of European style, offering the versatility to swing in like a door or tilt from the top for ventilation. Complementing this functionality, hopper windows feature a dual swing and tilt operation, allowing for increased airflow throughout the room. These windows are not only user-friendly and easy to clean but also safe for children.

## CHARACTERISTICS

- Space-saving design, ideal for indoor curtains and lifting airers
- Child-safe design to prevent accidental clips or drops
- Anti-theft features for added security and adequate airflow
- Dual function allows for both swinging open like a door or tilting from the top using the same handle
- Air flows from the sides when tilting, promoting better health
- Popular European style adds a touch of classic elegance.





# INWARD OPENING

## ADVANTAGES

Inward opening windows provide an added convenience for cleaning as they open into your home, allowing for easy access to the outside glass. In tilt mode, you can enjoy fresh air without having to remove items from the internal windows sills. However, when turned for cleaning, items must be removed from the sill. Additionally, inward opening windows offer the option to use external shutters, flyscreens, and balustrades, making them a versatile choice for your home

# OUTWARD OPENING

## ADVANTAGES

Outward opening windows are a classic and highly favored choice among homeowners. With this type of window, you won't have to remove items from your window sill to open it, as it swings outwards. You'll also have a vast selection of blinds, curtains, and internal shutters to choose from, as the opening window won't obstruct them.





# AWNING OPENING

## ADVANTAGES

Awning windows feature a smart and practical design that is hinged at the top and opens outward from the bottom, providing both ventilation and space-saving benefits. These windows can stand alone or be combined with fixed windows to create a stylish and functional configuration. With various size options available, the Modern Awning can be used independently or in combination with other window styles, such as direct glaze or casement windows, for even greater design flexibility.

## CHARACTERISTICS

- Slanted opening allows for ventilation even in wet weather.
- Various glazing options available to enhance home's comfort, acoustics, security, and privacy.
- Limit of 100mm possible for safety where openings need to be restricted to prevent falls.



# SLIDING

## ADVANTAGES

Nuvaux sliding systems are the epitome of modern luxury, boasting a sleek and sophisticated design that instantly elevates any room. Not only do they offer unobstructed views and ample natural light, but they also free up valuable floor space. Installing a Nuvaux sliding system in your home is a smart investment that will enhance the aesthetic appeal and functionality of your living space.

## CHARACTERISTICS

- Designed to save space and work seamlessly with indoor curtains and lifting airers.
- Child-safe design that eliminates the risk of accidents caused by clips or drops.





# LIFT & SLIDE

## ADVANTAGES

The Lift and Slide Door is designed to provide an exceptional living experience by seamlessly integrating indoor and outdoor spaces. With its advanced engineering and unparalleled functionality, it effortlessly glides open to reveal unobstructed views, flooding your home with natural light and creating a spacious ambiance. Its robust construction ensures uncompromising security and thermal performance, making it a top choice for architects, builders and homeowners alike.

## CHARACTERISTICS

- Space-saving design frees up interior space and can be paired with indoor curtains and lifting airers.
- Child-safe design eliminates the risk of clips or drops that could harm children.







# TILT & SLIDE

## ADVANTAGES

Tilt and slide doors offer a distinctive and innovative approach by combining a new sliding style with the tilt and turn functionality of European windows. Unlike traditional sliders that require effort to move back and forth, the sash slides effortlessly on rails, making it much easier to use. This sliding mechanism also improves sealing, ensuring that your home remains energy-efficient and comfortable.

Moreover, a simple turn of the handle allows the sash to tilt inwards for ventilation, providing a continuous flow of fresh air while keeping children and pets safely inside. This unique combination of features makes tilt and slide doors an excellent alternative to standard sliding doors, providing the perfect balance of convenience, safety, and functionality.

## CHARACTERISTICS

- Space saving design with no swinging leaf
- Simple operation with a single ergonomic handle
- Effortless sliding for easy opening and closing
- Robust construction for durability and weather resistance
- Excellent insulation values to help reduce energy costs
- Double and triple glazing options available for improved thermal and acoustic performance.



# BIO - FOLDING

LEGANT AND FOLDABLE. AIR PERMEABLE AND WATER TIGHT.

## ADVANTAGES

Creating living spaces filled with natural light has never been easier. Our high-performance folding system offers minimal design, high insulation, and functionality, thanks to hardware specifically designed for this purpose. This system is suitable for many different building types, with the added benefit of a corner opening without any columns. This unique feature maximizes transparency and makes opening and closing the system effortless. Additionally, one leaf can act as an opening door without interrupting the other folding leaves, providing practicality and convenience. The system's rolling hinges have been specially designed to slide smoothly on the bottom rail, ensuring quiet and easy operation.

## CHARACTERISTICS

- Heavy-duty top-hung wheel design for smooth and effortless operation
- Multiple folding opening style for versatile usage
- Ultra-height and ultra-wide design for enhanced visual appeal
- Wide vision for a clear view of the surroundings



# STACKER DOOR

## ADVANTAGES

Transform your indoor space into a beautiful outdoor oasis with Nuvaux's stacking glass walls. These innovative walls allow you to seamlessly slide large glass door panels on top of each other, creating a wide opening that welcomes natural light and fresh air. The durable aluminum frames and panels are expertly designed with thermal breaks and a full weather-stripped structural interlock system to ensure optimal energy efficiency. With Nuvaux's stacking glass walls, you can experience the beauty of the outdoors from the comfort of your own home.



# HINGED DOOR

## ADVANTAGES

A hinged door operates by exerting force on its free outer edge to either push or pull it open, creating an aperture for passage. The door can swing up to 180 degrees on its hinges. However, this type of door needs adequate clearance space behind it to enable unrestricted movement.

## CHARACTERISTICS

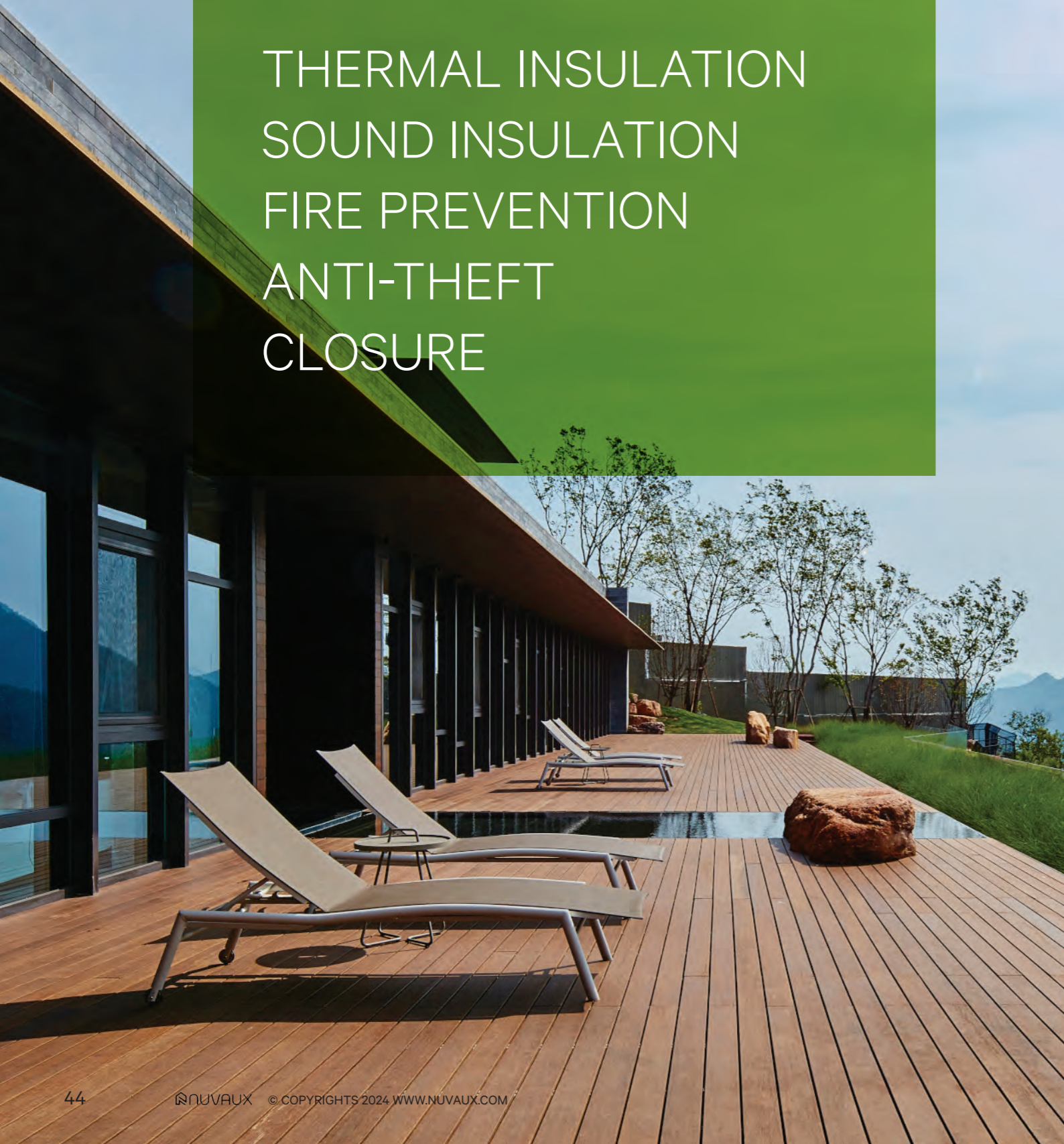
- Low maintenance for convenience and ease of use
- Common, plentiful, and affordable to suit a range of budgets
- Easily customizable to fit specific needs or preferences





# PERFECT SOLUTION

THERMAL INSULATION  
SOUND INSULATION  
FIRE PREVENTION  
ANTI-THEFT  
CLOSURE



## HEAT INSULATION SOLUTION

When selecting windows and doors, prioritizing heat insulation is crucial. To ensure high-quality insulation, we adhere to strict material selection and sampling standards, opting for solid wood plastered lamellae and a composite connection structure with aluminum profiles that takes into account the different shrinkage coefficients of wood and metal materials.

Our windows boast an overall load-bearing frame made of wood profiles, a renewable resource with exceptional thermal insulation properties. To connect wood and aluminum, we use PA66 nylon connectors with low heat transfer coefficients and superior strength. With a thermal conductivity of  $\leq 1.5w/w2k$  for standard configurations, and up to  $0.8w/w2k$ , our windows keep outdoor heat at bay in summer while minimizing indoor air-conditioning loss. Moreover, they won't freeze or dew in cold winter months.

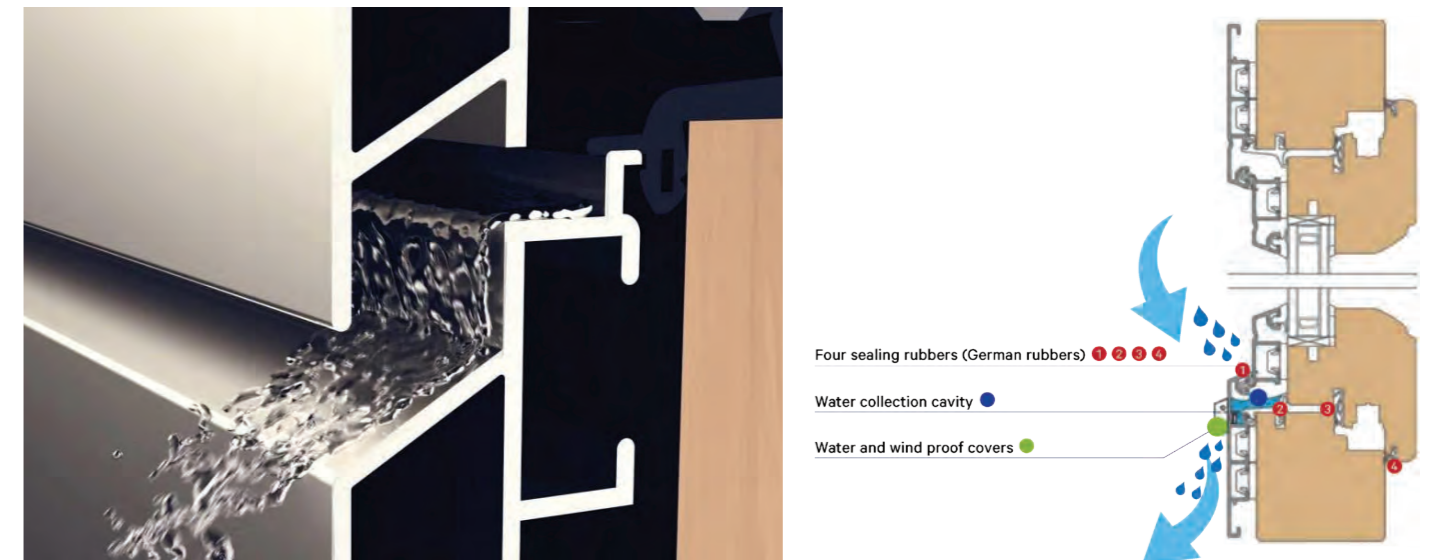


## WATER PROOF SOLUTION

In coastal or rainy cities, the water-tightness of windows and doors is critical. Our window and door system excels in this regard, with features such as water-blocking, catchment, drainage, and anti-backflow, ensuring complete waterproof performance.

German sealing rubbers of superior quality further enhance the water resistance of the system. Waterproof rubbers effectively block most rainwater, while a water collection cavity is designed to accommodate any seepage. Water and windproof covers ensure smooth water discharge and prevent backflow, even under strong winds.

Windows water-blocking and drainage system:





# SOUND INSULATION SOLUTION

## The Impact of Noise Pollution on Health

According to a report by WHO, approximately 7 million people die of heart disease every year, and around 3% of these deaths can be attributed to exposure to traffic noise. Furthermore, 21 million individuals with cardiac conditions suffer from noise pollution, 5% of people experience frequent nightmares, and at least 15% develop tinnitus due to exposure to traffic noise each year. These statistics illustrate the serious harm that noise pollution can have on human health, and emphasize the importance of taking measures to reduce noise levels in our environment.

## Creating a healthy environment free from noise is essential for a good quality of life

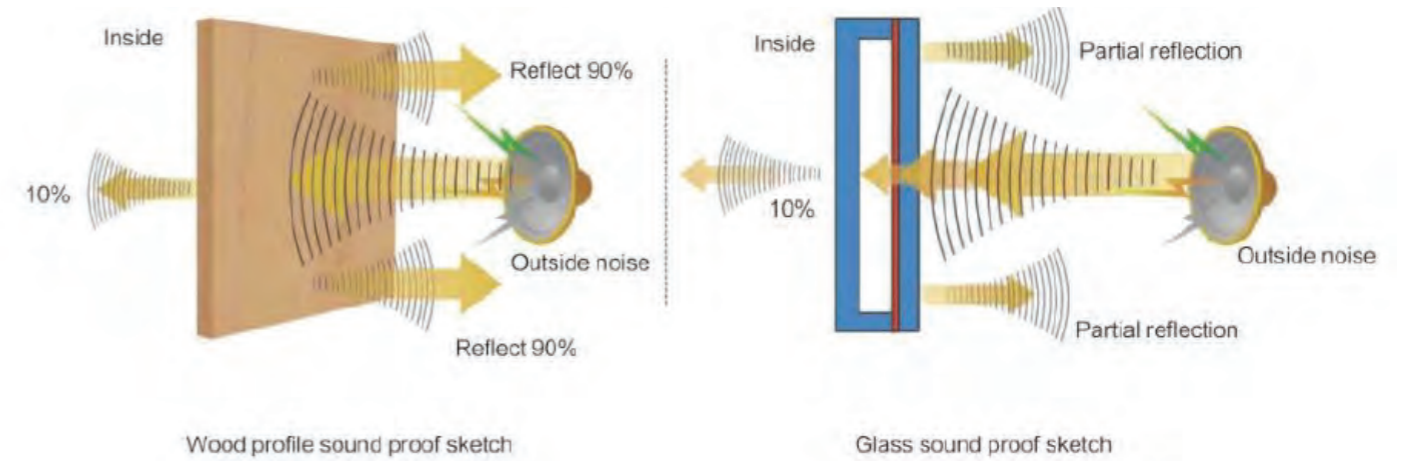
Achieving effective soundproofing largely depends on the glass configuration, frame profile, and rubber system used in windows and doors. The "Acoustic Environmental Quality Standards" GB3096-2008 classify noise environments into five functional areas based on regional function characteristics and environmental quality requirements.



Sound proof glass configurations in different environments:

Note: The most suitable living environment for humans is between 35dB-45dB; PVB stands for laminated glass, and V stands for vacuum glass.

Level	Environment Functional Areas	Day(DB)	Night (DB)
0	Refer to the areas, very quiet, the rehabilitation and recuperation areas	50	40
1	Refer to the areas where residential houses, healthcare, cultural education, scientific research, design, and administrative offices are located, and where quiet is necessary.	55	45
2	Refer to the areas where the main functions are commercial finance, trade fairs, or residential commercial industrial complexes, and require maintaining a quiet environment.	60	50
3	Refer to the areas where industrial production and warehousing logistics are the main functions that require preventing industrial noise from causing a serious impact on the surrounding environment.	65	55
4	Near the highway and requires preventing traffic noise from causing a serious impact on the surrounding environment.	70	60



The combination of wood and aluminum materials in the window and door system is designed with a composite structure, ensuring tight protection of the four tongue and groove joints of the window sash and frame. Soft and hard co-extruded rubber strips seal each joint, providing optimal sealing performance. This system can be configured with various glass options to achieve aviation-grade mute standards and sound insulation up to  $R_w=45dB$ , class I\*. A quiet and comfortable living environment is created for customers who value quality of life.

The sealing performance of windows is crucial to the quality of doors and windows. The entire system guarantees effective sealing, keeping living spaces free from dust while achieving the best waterproof, sound insulation, and thermal insulation performance. A scientific locking point configuration along the perimeter of the door and window frame and fan ensures tight overall closure, while a stepped design sealed with EPDM strips and elastic pressing method of the composite rubber strip prevents rainwater from leaking into the room. The drainage system, designed based on the principle of air pressure balance cavity, uses inclined surface stepped design for smooth drainage, providing watertight performance better than the national standard.





# ANTI-THEFT SOLUTION

## Multi-lock anti-theft handle ensures locking safety

Ensuring the safety of our homes is of utmost importance, and the hardware accessories of doors and windows play a crucial role in achieving this. Our multi-lock anti-theft handle is designed with force analysis to provide optimum locking safety. The lock points and lock seats are strategically arranged around the entire frame fan, and when closed, the lock point and lock seat are firmly fastened together. Together with the hinges and other hardware, this creates a strong sealing pressing force, resulting in excellent airtight performance. Our aluminum-clad wood products use exposed and hidden hardware, providing superior anti-prying performance that meets the European RC3 anti-prying grade standard.



## Laminated glass is a highly effective security glass

It made by bonding multiple layers of glass together with a polymeric interlayer sheet in a specialized autoclave chamber. This process creates a durable and seismic-resistant material that is difficult to pierce and offers excellent anti-explosion properties.

Laminated glass is increasingly being used in various types of building construction applications, serving as a translucent and durable material option that offers benefits such as unobstructed views and daylighting while also meeting building code standard requirements for safety glazing. It is particularly effective at reducing the likelihood of injury, making it an ideal choice for security-conscious applications.



# FIRE PREVENTION

Fire-rated windows are essential for preventing the spread of fire and smoke within buildings. They are designed to withstand extremely high temperatures and provide a barrier to protect people and property. These windows can be used in a variety of buildings, including schools, hospitals, offices, and residential properties.

Fire-rated windows are tested and rated according to various international standards, including UL, ASTM, and EN. The rating system indicates the level of fire resistance and the length of time that the window can maintain its integrity and prevent the spread of fire and smoke.

In addition to their fire-resistant properties, these windows also provide other benefits. They can improve the energy efficiency of buildings by reducing heat transfer and preventing drafts. They can also enhance the aesthetic appeal of a building by providing natural light and views.

- The PVC window profile has a low refractory performance, causing it to soften between 110°C to 130°C. In the event of a fire, this type of window generates a significant amount of smoke and toxic gases, creating a hazardous indoor environment.
- With a melting point of around 650°C, aluminum windows can quickly lose their structural integrity in the event of a fire. The frame may soften, melt, and collapse within minutes, while the glass may shatter and fail to provide any fire protection.
- On the other hand, wood profiles boast exceptional refractory performance. When subjected to fire, the wood profile begins to burn and form a carbide layer that isolates the wood and the flames. This increases its tolerance to high temperatures and prolongs its lifespan when exposed to fire. In fact, a wood window can burn for up to 30 minutes at temperatures ranging from 700°C to 900°C, with only a quarter of the wood material burning up. This effectively prevents the fire from spreading to the interior of the building. Additionally, double-color potassium glass is used to safeguard the entire window from collapsing and halt the fire's progress to other areas.







## MATERIALS

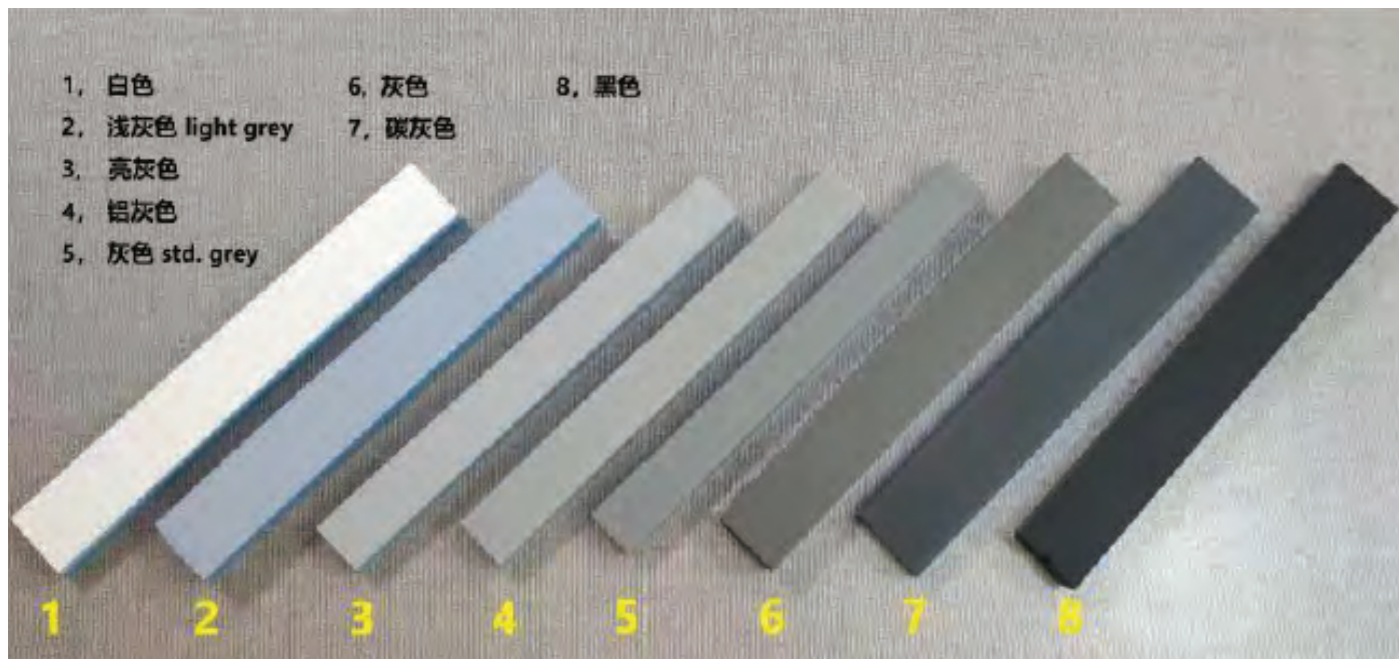
At our company, we take pride in adhering to rigorous production and quality control guidelines. We understand the importance of meeting our clients' expectations for the highest standards in architectural systems.

That's why we've implemented a meticulous certification process and maintain in-house quality control laboratories that conduct thorough testing on our products at every stage of production. Our commitment to excellence means you can trust the materials we provide to meet your exacting standards.



# ALUMINUM

We have upgraded our aluminum surface coating process from the traditional electrostatic powder coating spraying to a more advanced liquid electrostatic spray method. Moreover, we now use PVDF coating instead of electrostatic spraying, which not only offers the same high performance but also boasts superior resistance to air pollution, fading, frost, and UV rays. In addition, we offer a wide range of colors to choose from, making it suitable for various applications.





# WOOD

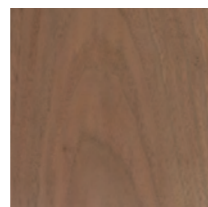
We have introduced a new liquid electrostatic spray process for painting aluminum surfaces, replacing the older electrostatic powder coating spraying method. This change also includes the use of PVDF coating, which not only matches the performance of electrostatic spraying but also offers excellent resistance against air pollution, fading, frost, and UV rays. With a wide range of colors to choose from, this upgrade provides numerous applications for our products.

In addition, our window utilizes German SIKKENS water lacquer for its wood profiles. The weather resistance of the lacquer is guaranteed for 10 years in typical natural environments and can protect against strong ultraviolet radiation in high altitude regions for more than 5 years.



## White OAK

Grain/Texture: Straight, with a coarse, uneven texture



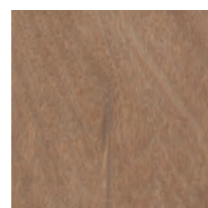
## Walnut

Grain/Texture: Usually straight, but can be irregular. Has a medium texture and moderate natural luster



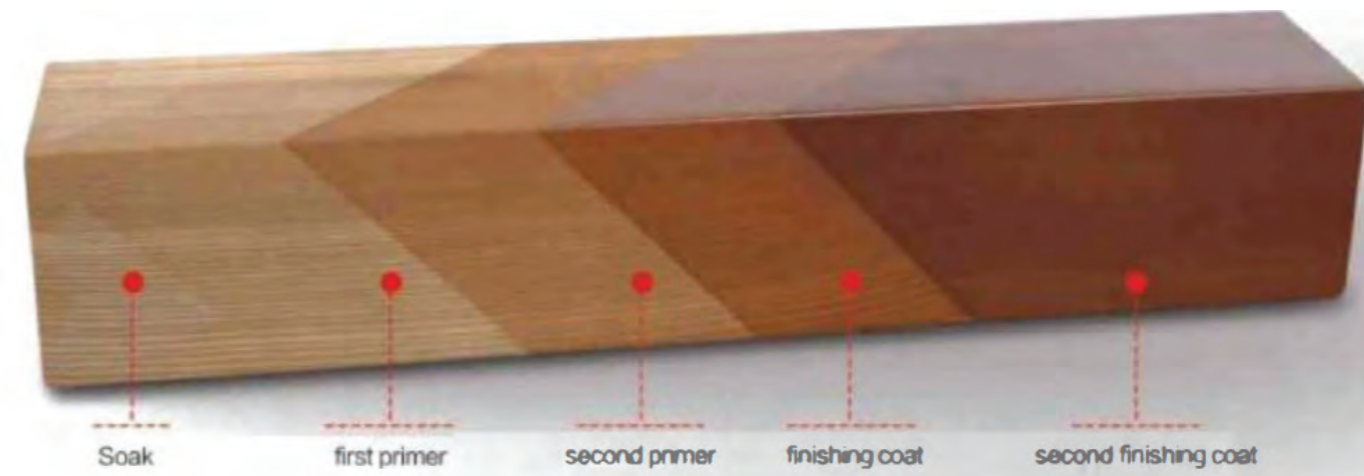
## Pine

Grain/Texture: Straight with an even, medium texture



## OKoume

Grain/Texture: Straight to wavy or slightly interlocked. Texture is medium, with good natural luster



## THE ADVANTAGES OF WATER LACQUER

Water lacquer offers several advantages compared to other types of wood finishes. Firstly, it creates a paint film that blends seamlessly with the natural grain of the wood, giving it an attractive and authentic look. Additionally, the primer used in water lacquer can enhance the wood's waterproof properties, preventing it from bending or warping over time. Water lacquer also has good weather fastness, which means it is resistant to the effects of UV radiation and will not easily fade. Finally, it is easy to maintain - simply polishing the previous coat and applying 1-2 coats of the same color will restore its original appearance.



Water lacquer is an organic lacquer that is derived from plants. It consists of micro-molecule compounds that exhibit strong permeability and adhesive force. This type of lacquer can penetrate the gaps between wood molecules, which enhances the wood's resistance to erosion, mold, and insect pests. As a result, water lacquer offers excellent protection for wooden profiles.



## PAINTING

- German SIKKENS water lacquer
- No formaldehyde, make your living room healthier
- Moisture proof
- UV resistance
- Breathing coating
- Any color you want

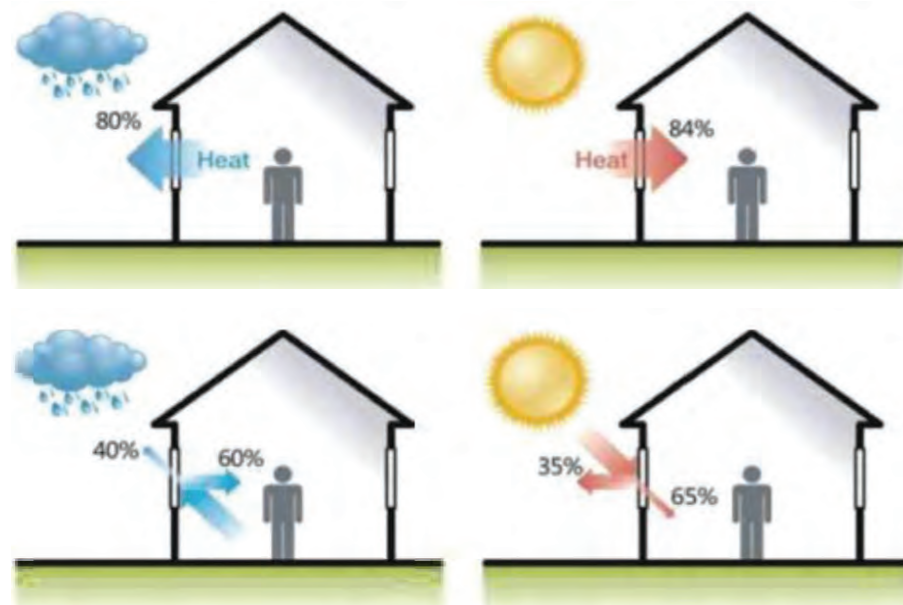


# GLASS

All doors and windows use energy-saving hollow glass, which offers superior thermal insulation with a U-value of 1.0 W/(m<sup>2</sup>·K), the highest international rating for energy efficiency. This advanced technology ensures maximum performance in keeping indoor spaces warm, providing our clients with exceptional comfort and energy savings.

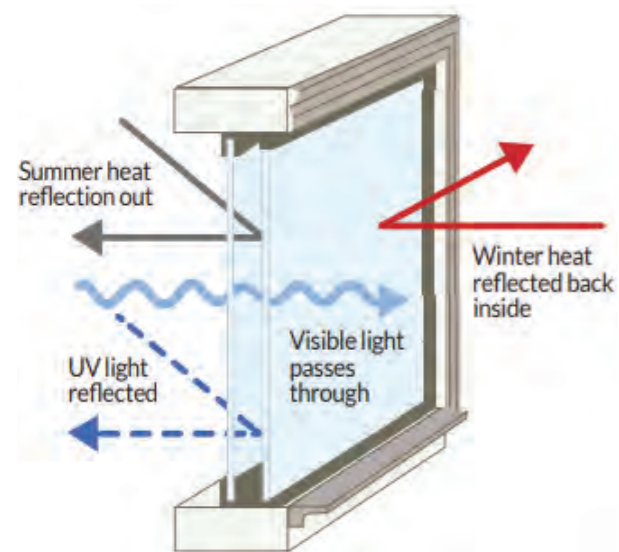
## ENERGY SAVING HOLLOW LOW-E GLASS

The energy-saving hollow low-e glass used in all doors and windows is a sophisticated design consisting of a 5mm+12A+5mm structure. The inside area features tempered glass, while the outside area is made of low-e glass, with the gap between the two filled with argon. This innovative design significantly improves the performance of heat insulation and warm keeping. Compared to usual hollow glass, this glass can increase the performance of heat insulation by 50% and energy saving by 30%. The low-e glass, also known as low radiation glass, has a coating that enables excellent transmission of visible light and reflection of infrared rays. Compared to traditional coating glass, low-e glass has better heat insulation and light transmission performance.

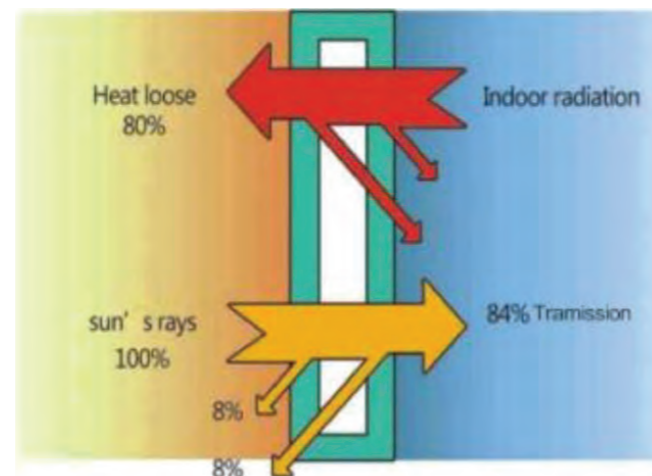


During winter, the Low-e coating reflects the room's heat back, reducing heat loss and keeping the space cozy. This results in significant energy and heating cost savings. Similarly, in summer, the Low-e coating allows visible light to pass while blocking the heat from outside solar radiation. As a result, it significantly reduces air conditioning costs and keeps the room cool.

## LOW-E GLASS

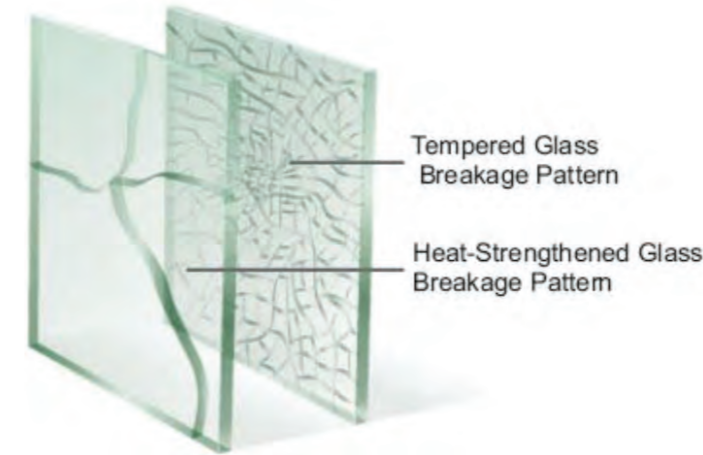


## INSULATING GLASS



## TEMPERED GLASS

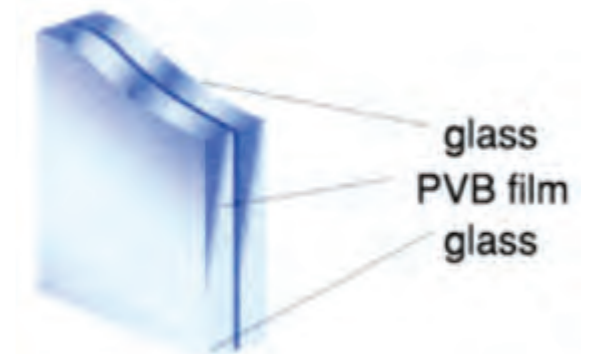
Tempered glass is a type of strengthened glass that undergoes chemical or physical processes to increase its load-bearing capacity. The surface of the glass is first subjected to pressure, resulting in a stronger glass surface. The benefits of tempered glass are:



- Tempered glass offers unparalleled strength, with a bending capacity three to five times greater than regular glass and an impact resistance five to ten times stronger.
- Provides an extra layer of security, thanks to its strength and resistance to breaking.
- In case of breakage, tempered glass shatters into small, harmless fragments, minimizing the risk of injury.
- Offers excellent thermal shock resistance, preventing potential explosions and ensuring safety.

## BULLET PROOF GLASS

Our company offers a wide range of bulletproof glass options made of multi-layered glass and PVB materials, with a thickness of over 20mm. This safety glass effectively prevents bullets from penetrating, ensuring optimal protection. In the event of impact, the PVB interlayer absorbs the energy, reducing the risk of injuries. Additionally, the interlayer continues to safeguard the building until the glass is replaced, ensuring long-term safety and security.



## VARIETY OF SHAPES

Our wood-clad windows offer limitless options when it comes to shape. Whether it's a triangle, oval, round, or even heart-shaped, we can customize the design to meet your specific needs and preferences.



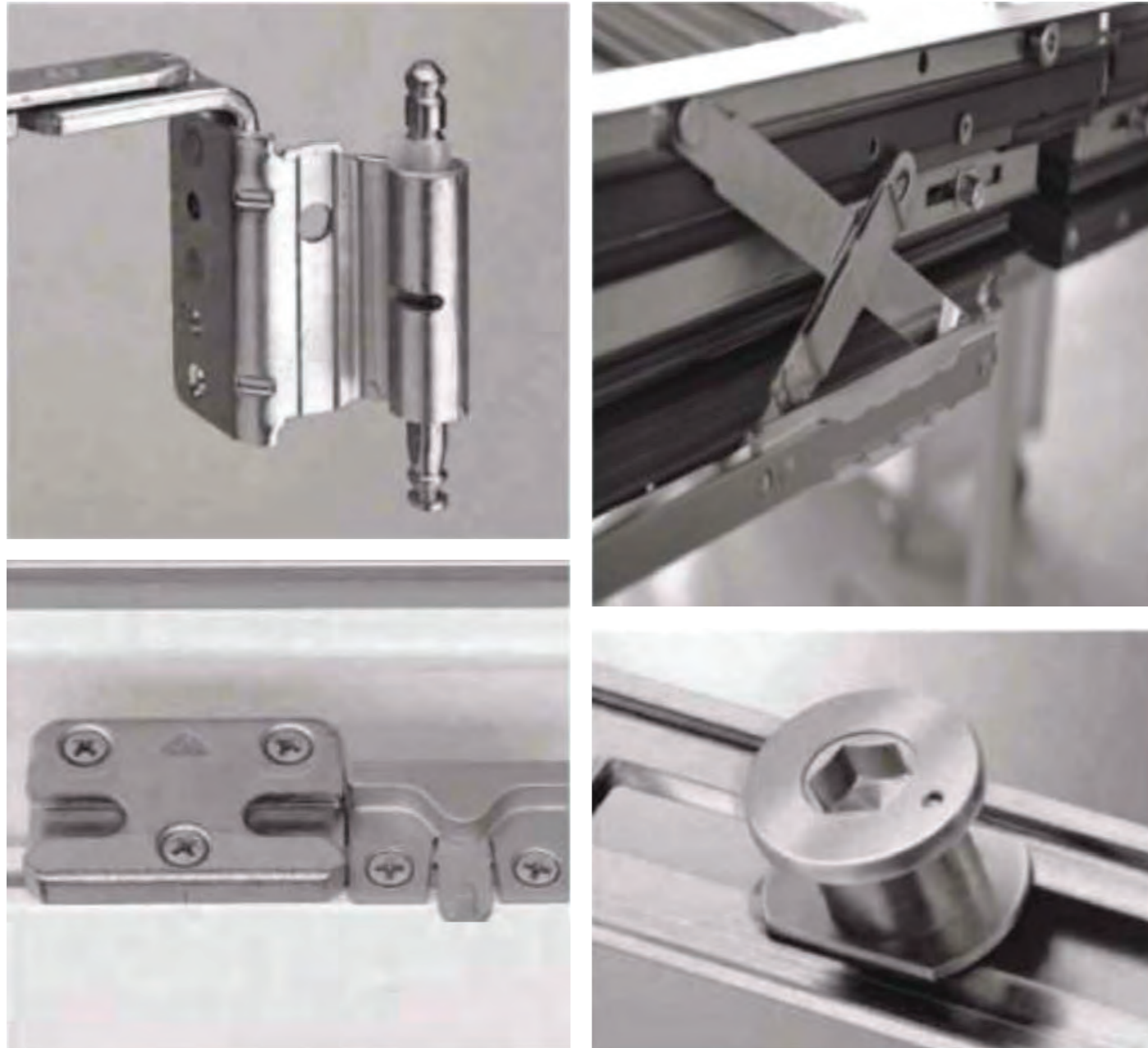


# HARDWARE

Our commitment to quality is evident in every detail of our products. Our windows are equipped with German-made Roto mechanisms, setting the standard for technology and market leadership worldwide. These mechanisms ensure optimal security, ease of use, durability, and design.

We understand that the details make all the difference when it comes to quality. That's why we choose only the best hardware from global leading brands, ensuring that our windows can withstand even the harshest environments. With a variety of opening styles to choose from, you can select the hardware that best suits your needs.

Whether you opt for our toe opening mechanism or another comfortable and convenient option, windows are designed to make your life easier and more enjoyable.



# HANDLE DESIGN

Handles are not only made of high-quality, refined German metal, but they also serve as visual works of art that reflect your personal style and taste.





# CERTIFICATIONS & AWARDS

## North American Certification

**NFRC Product Certificate of Authorization**

**Manufacturer:** International Door and Window Technology Building of Dongfang Road  
**Street:** GaoBeiDian, Hebei 074000  
**City/State/Zip:** GaoBeiDian, Hebei 074000

**Product Series:** IV68 (Wood Aluminium-68) Single Oper Inside Door  
**Product Type:** ED5L

**Simulation Lab:** SATI  
**Sim Report #:** J4694.01-116-45  
**Sim Report Date:** 07/23/2019  
**Revised Date:**  
**Auth. Ratings:** U-Factor, SHGC, VT, CR  
**Procedural Year:** 2017

**Test Lab:** TATI  
**Test Report #:** J4691.01-116-46  
**Test Date:** 11/01/2019  
**Revised Date:**  
**Test Method:** NFRC 102  
**Procedural Year:** 2017


**Initial Certification Date:** 12/13/2019  
**Re-Certification Date:**  
**Expiration Date:** 11/01/2024

**CPD Product Line Number:** HEB-M-6  
**Product Number Range:** 00001-00001 to 00078-00004

**Comments:**

I hereby certify that all requirements for NFRC Certification Authorization have been met and that the above information is true and correct, to the best of my knowledge.

**Authorized IA Signature:**



**NFRC Product Certificate of Authorization**

**Manufacturer:** International Door and Window Technology Building of Dongfang Road  
**Street:** GaoBeiDian, Hebei 074000  
**City/State/Zip:** GaoBeiDian, Hebei 074000

**Product Series:** MS65U+ Open Outside Window (Casement)  
**Product Type:** CSSV

**Simulation Lab:** SATI  
**Sim Report #:** J4684.01-116-45  
**Sim Report Date:** 07/08/2019  
**Revised Date:**  
**Auth. Ratings:** U-Factor, SHGC, VT, CR  
**Procedural Year:** 2017

**Test Lab:** TATI  
**Test Report #:** J4683.01-116-46  
**Test Date:** 10/31/2019  
**Revised Date:**  
**Test Method:** NFRC 102  
**Procedural Year:** 2017

**Initial Certification Date:** 12/13/2019  
**Re-Certification Date:**  
**Expiration Date:** 10/31/2024

**CPD Product Line Number:** HEB-M-7  
**Product Number Range:** 00001-00001 to 00090-00004

**Comments:**

I hereby certify that all requirements for NFRC Certification Authorization have been met and that the above information is true and correct, to the best of my knowledge.

**Authorized IA Signature:**



## Australia and New Zealand Certification

**CODEMARK**  
CERTIFICATE NO: CM70090  
Date of issue: 18 December 2020

**PRODUCT CERTIFICATE**  
**Moser Aluminium-Clad Wood & Thermal Break Aluminium Windows & Doors**

**BUREAU VERITAS**

**KEY INFORMATION**

**1. CERTIFICATE HOLDER DETAILS**

**2. PRODUCT CERTIFICATION BODY:**  
Bureau Veritas Australia Pty Ltd  
3/435 Williamstown Road  
Port Melbourne VIC 3207  
Australia  
Ph: 1800 855 190  
www.bureauveritas.com.au  
Bureau Veritas Australia Pty Ltd  
The complainants process for this certificate can be found here: www.bureauveritas.com.au/you-feedback

**3. SUMMARY OF DESCRIPTION OF BUILDING METHOD OR PRODUCT**  
Moser aluminium clad timber windows and doors are made of solid American white oak timber and aluminium. The external side has a cladding of powder coated aluminium. The solid timber interior has a scratch resistant dual component paint finish. Moser thermal break windows and doors are made of powder coated aluminium. Both the aluminium clad timber and thermal break aluminium windows and doors are double glazed. Window models include fixed window, tilt & turn, awning and hinged casement windows. Door models include inward and outward opening hinged doors and sliding doors. This certificate covers the models listed in Section 9.

**4. SUMMARY OF INTENDED USE OF BUILDING METHOD OR PRODUCT**  
Moser Aluminium Clad Timber & Thermal Break Aluminium Windows & Doors contribute to natural daylight and ventilation, and are also suitable for use in building envelopes enclosing spaces where the temperature or humidity (or both) are modified.

**5. BUILDING CODE PROVISIONS**  
The performance classes of the New Zealand Building Code that are relevant to the intended use and with which the building method or product complies or contributes to (wherever applicable) are:  
B1 Structure: B1.3.1, B1.3.2, B1.3.3 (a, b, h, j) B1.3.4  
B2 Durability: B2.3.1(B), B2.3.1(C) (for hardware)  
E2 External Moisture: E2.3.1 (contributes to), E2.3.7  
E3 Internal moisture: Performance Clauses E3.1 (contributes to)  
F2 Hazardous Building Materials: F2.3.1, F2.3.2, F2.3.3  
G4 Ventilation: G4.3.1, G4.3.3 (contributes to)  
G7 Natural Light: G7.3.1 (contributes to), G7.3.2 (contributes to)  
H1 Energy Efficiency: H1.3.1(a, b), H1.3.2E (contributes to)

**AS/NZS**  
This certificate is issued by an independent certification body accredited by JAS-ANZ, the product certification accreditation body appointed by the Chief Executive of the Ministry of Business, Innovation and Employment under the Building Act 2004. The Ministry does not in any way warrant, guarantee, or represent that the building method or product that is the subject of this certificate conforms with the New Zealand Building Code, nor accept any liability arising out of the use of the building method or product. The Ministry declines to the extent permitted by law, all liability (including negligence) for claims of damage, expense, damages, and costs arising as a result of the use of the building method(s) or product(s) referred to in this certificate. This certificate may only be reproduced in its entirety. It is advised to check that this certificate is currently valid and not withdrawn or suspended by referring to the Register of Product Certificates on the Building Performance website: <http://www.building.govt.nz>

Page 1 of 5

## Europe Certification

**CERTIFICATE**  
Certified Passive House Component  
Component-ID: 0600w03 valid until 31st December 2020

Passive House Institute  
Dr. Wolfgang Feist  
64283 Darmstadt  
Germany

**Category:** Window Frame  
**Manufacturer:**  
**Product name:** Passive 130 C

This certificate was awarded based on the following criteria for the cool, temperate climate zone

Comfort  $U_{W, installed} = 0.79 \leq 0.80 \text{ W/(m}^2\text{K)}$   
 $U_{W, installed} \leq 0.85 \text{ W/(m}^2\text{K)}$   
with  $U_g = 0.70 \text{ W/(m}^2\text{K)}$

Hygiene  $f_{R_{sw-0.25}} \geq 0.70$

**certified component**  
cool, temperate climate  
ph B

Passive House efficiency class: phE, phD, phC, **phB**, phA  
www.passivehouse.com

**CERTIFICATE**  
Certified Passive House Component  
Component-ID: 1826w03 valid until 31st December 2022

Passive House Institute  
Dr. Wolfgang Feist  
64283 Darmstadt  
Germany

**Category:** Window Frame  
**Manufacturer:**  
**Product name:** Passive 126+

This certificate was awarded based on the following criteria for the cool, temperate climate zone

Comfort  $U_{W, installed} = 0.79 \leq 0.80 \text{ W/(m}^2\text{K)}$   
 $U_{W, installed} \leq 0.85 \text{ W/(m}^2\text{K)}$   
with  $U_g = 0.70 \text{ W/(m}^2\text{K)}$

Hygiene  $f_{R_{sw-0.25}} \geq 0.70$

**certified component**  
cool, temperate climate  
ph B

Passive House efficiency class: phE, phD, phC, **phB**, phA  
www.passivehouse.com

**PRODUCTS RVA C IUT**  
Notified Body nr. 0336

**Certificate of constancy of performance**  
0336 – CPR – 89215309 F

In compliance with Regulation (EU) No 305/2011 of the European Parliament and of the Council of 9 March 2011 (the Construction Products Regulation or CPR), this certificate applies to the construction product(s)

**Pedestrian doorsets, industrial, commercial, garage doors and openable windows**  
specified by the commercial name(s)  
**Aluminium Tilt and Turn Window MS65U+  
Wooden/Aluminium Tilt and turn Window IV68**  
placed on the market under the name or trade mark

This certificate attests that all provisions concerning the assessment and verification of constancy of performance described in Annex ZA of the standard(s)

**EN 14351-1:2006 + A2:2016**  
under system 3 for the performance set out in this certificate are applied and that the factory production control conducted by the manufacturer is assessed to ensure the constancy of performance of the construction product

This certificate was first issued on 17<sup>th</sup> March 2020 and will remain valid as long as neither the harmonised standard, the construction product, the AVCP methods, nor the manufacturing conditions in the plant are modified significantly, unless suspended or withdrawn by the notified product certification body.

TÜV Rheinland Nederland BV  
Westervoortsewijk 73  
NL - 6827 AV Arnhem  
The Netherlands

Arnhem, 17th March 2020  
Mr. R. de Jonge, Managing Director

This certificate dated 17<sup>th</sup> March 2020 consists of 1 page and 1 Annex of 2 pages  
www.tuv.com/nl Page 1 of 3  
TÜV Rheinland  
Precisely Right.

**PRODUCTS RVA C IUT**  
Notified Body nr. 0336

**Certificate of constancy of performance**  
0336 – CPR – 89215309 F  
Annex 1

**EN 14351-1:2006 + A2:2016**  
Product : Aluminium Tilt and Turn Window MS65U+  
Essential characteristics Levels and/or classes Report(s)

Resistance to wind load	Class A2	89212825-01, dated 21 <sup>st</sup> Dec. 2017
Resistance to snow and permanent load	N.P.D.	
Reaction to fire	N.P.D.	
External fire performance	N.P.D.	
Watertightness	Class 9A	89212825-01, dated 21 <sup>st</sup> Dec. 2017
Dangerous substances	N.P.D.	
Impact resistance	N.P.D.	
Load-bearing capacity	N.P.D.	
Height	N.P.D.	
Acoustic performance	N.P.D.	
Thermal transmittance	N.P.D.	
Radiation properties	N.P.D.	
Air permeability	Class 2	89212825-01, dated 21 <sup>st</sup> Dec. 2017

**EN 14351-1:2006 + A2:2016**  
Product : Wooden/Aluminium Tilt and Turn Window IV68  
Essential characteristics Levels and/or classes Report(s)

Resistance to wind load	Class C5	89206427-01, dated 27 <sup>th</sup> August 2014
Resistance to snow and permanent load	N.P.D.	
Reaction to fire	N.P.D.	
External fire performance	N.P.D.	
Water tightness	Class 8A	89206427-01, dated 27 <sup>th</sup> August 2014
Dangerous substances	N.P.D.	
Impact resistance	N.P.D.	
Load-bearing capacity	N.P.D.	
Height	N.P.D.	
Acoustic performance	N.P.D.	
Thermal transmittance	N.P.D.	
Radiation properties	N.P.D.	
Air permeability	Class 4	89206427-01, dated 27 <sup>th</sup> August 2014



# SHOW CASES







# PARKFLEET HOTEL

## 2022 WINTER OLYMPICS

HEBEI, CHINA

Parkfleet Hotel is situated in the heart of Thaiwoo Ski Town and is a part of the esteemed ABF Hotels and Resorts Group, a global leader in the hospitality industry. Regarded as one of the top 30 hotels worldwide, it offers unparalleled luxury and comfort to its guests









# MEIJING SUXIN COURTYARD ESTATE

ZHENGZHOU, CHINA

The Meijing SuXin Courtyard Estate has been designed and constructed with a focus on energy efficiency, environmental sustainability, and the latest technology, providing its residents with a comfortable and eco-friendly lifestyle.









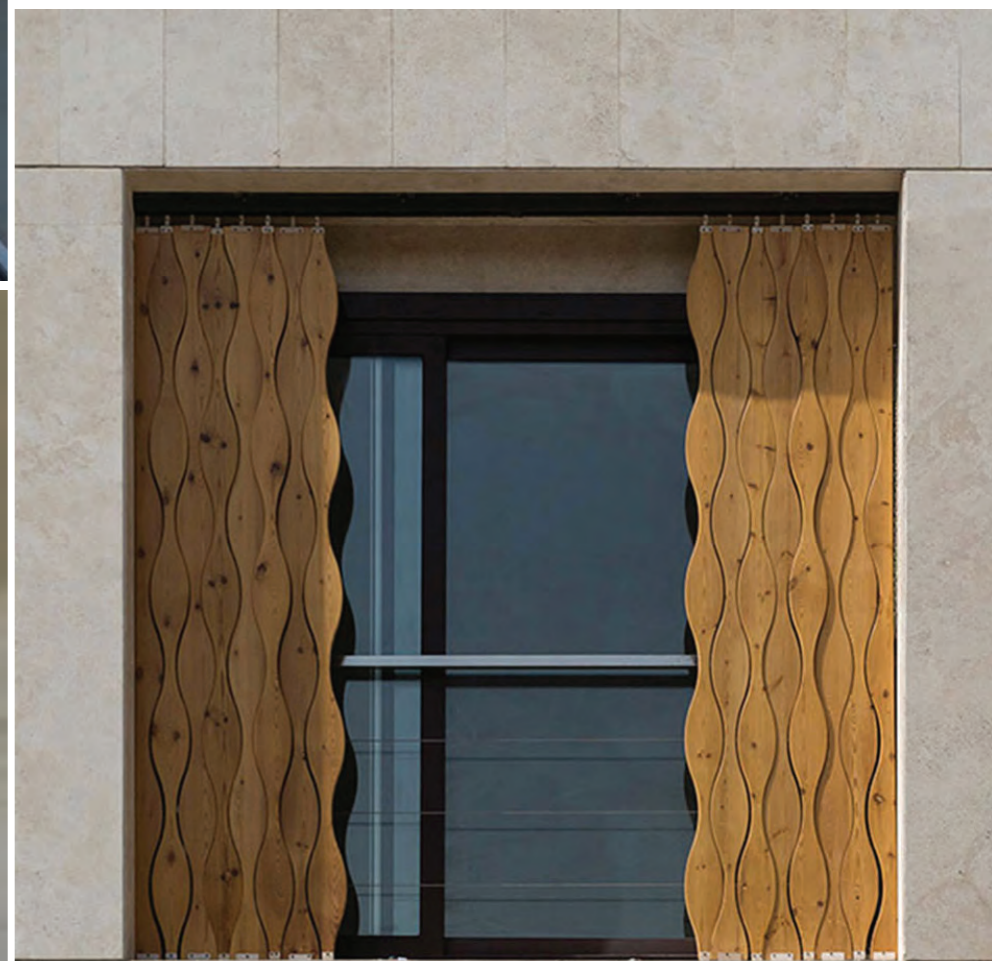
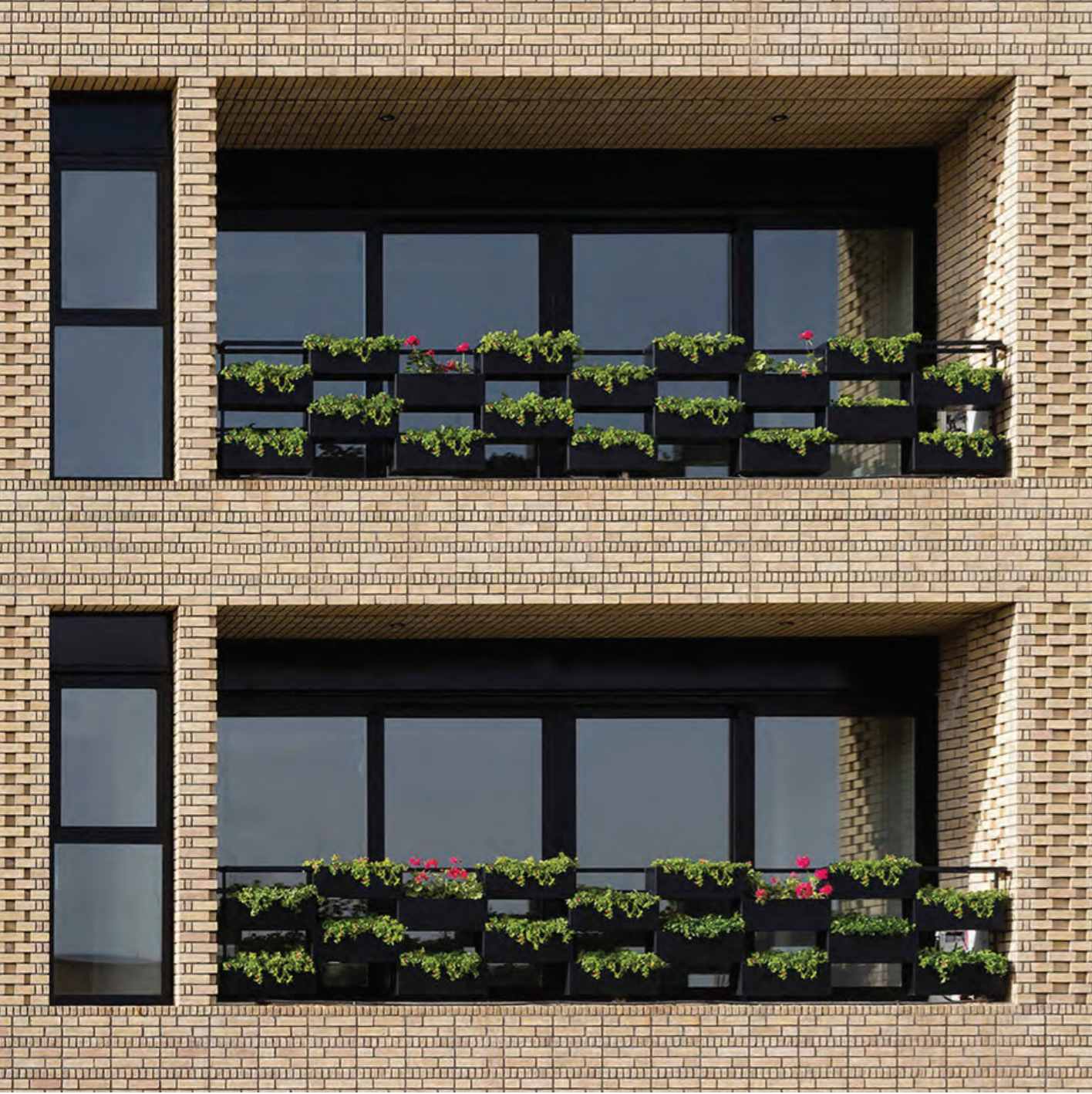


# IRAN ALI SABA APARTMENT

TEHRAN, IRAN

The Ali Saba apartment project, situated in the heart of Tehran, Iran, commenced in 2013 and was finalized in 2015. In 2014, aluminum alloy energy-saving doors and windows were procured for the project. The most notable aspect of this endeavor is the large and spacious lift and sliding door, designed in a German style, which creates an expansive balcony opening.







# PANAMA SOFITEL FIVE STARS HOTEL

PANAMA CITY, PANAMA

The luxurious 5-star Sofitel Legend Casco Viejo hotel in Panama is situated in the heart of the UNESCO World Heritage Site of the Casco Viejo district, offering an unparalleled experience to both cultural and business travellers. Once home to the Union Club of Panama, the hotel stands as a tribute to Panamanian culture, history, and heritage. To complement the Santorini style of the project and its proximity to the Panama Canal, the client chose SD70 wood-aluminum composite and solid wood window system in 2018.



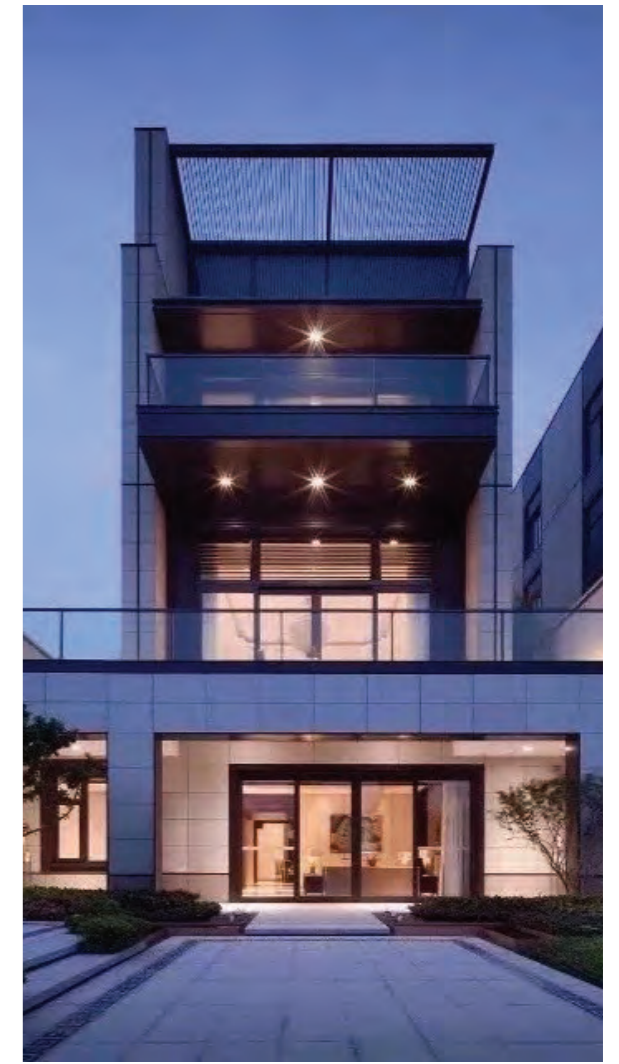




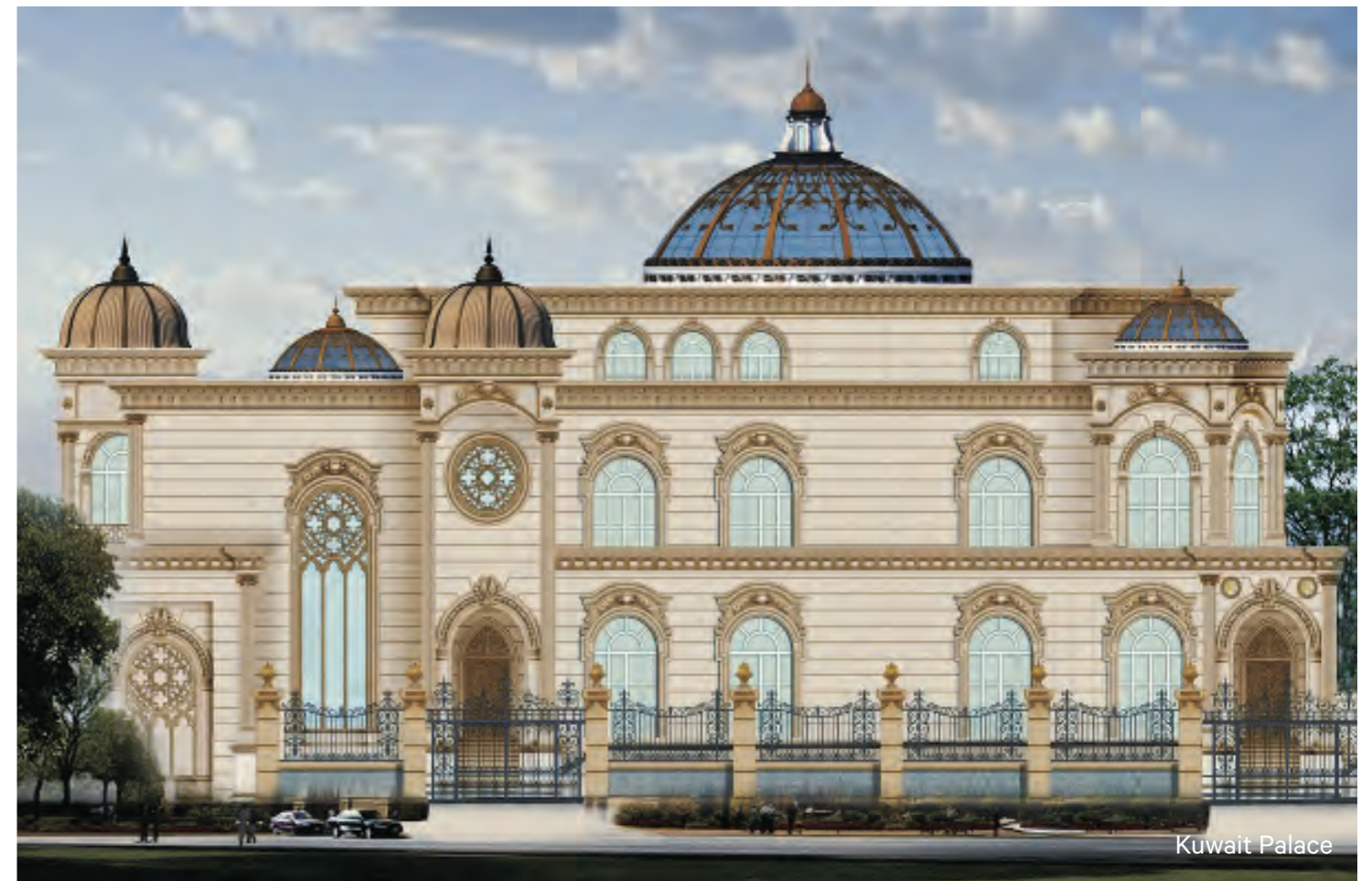




Hutou Mountain Cafe



Shidao Shanju Cottage Hotel



Kuwait Palace





Chongqing Changjiahui Danzishi Old Street



Nanjing Yard



Sanya CITIC Peninsula Cloud Mansion



Los Angeles formosa villa1



Kuwait Palace



Chinese Style House